

Z-DECK™ TRUCK LEVELER



Improve productivity

- ▶ Allows trailers to be serviced at or above dock level
- ▶ Helps eliminate pit wall and bumper obstructions
- ▶ Unique, z-shaped deck keeps tires angled towards the dock in the lowered position and keeps tires level in the raised position
- ▶ Allows full-width access to loads
- ▶ Minimizes product damage from servicing trucks below dock level

Low-profile design

- ▶ 1 5/8" (42 mm) rear section collapsed height to service standard trailers
- ▶ Slopes upwards to 8" (203 mm)

Easy installation

- ▶ Surface mounting does not require costly in-ground pit

Consistent trailer alignment

- ▶ Integral wheel guides center trailers at the dock, minimizing equipment damage



**IMPROVE SAFETY AND PRODUCTIVITY WITH
FULL-WIDTH ACCESS TO ANY LOAD.**

The Z-Deck Truck Leveler raises the trailer to appropriate dock height, providing unobstructed trailer access. The unique Z-shaped deck design helps minimize the slope of the lifting surface, keeping tires even and reducing opportunity for trailers to move away from the dock.

RITE·HITE®

Nominal dimensions:

The Z-Deck Truck Leveler platform is 11' (3353 mm) wide x 18' (5486 mm) long.

Operation:

The truck is positioned between dual wheel guides as it approaches the loading dock. When the truck is in position, the dock attendant pushes the "Raise" button on the control panel to raise the deck to the appropriate height. When loading and unloading is complete, the dock attendant pushes the "Lower" button on the control panel to lower the deck.



Allows for full width access

Safety features:

- ▶ Non-adjustable hydraulic velocity fuse limits platform free-fall in case of hose failure.
- ▶ An RHR-600 Dok-Lok Vehicle Restraint with a 12" carriage is recommended.
- ▶ Unique z-shaped profile deck, minimizes trailer "roll-away".

Standard features:

- ▶ Z-Deck capacity is 60,000 lbs (27,210 kg).
- ▶ 2" (51 mm) collapsed height.
- ▶ 2" (51 mm) to 15" (381 mm) lift service range.
- ▶ 12-month money-back guarantee.
- ▶ 5-year structural and hydraulic warranty.

Loading dock bumpers:

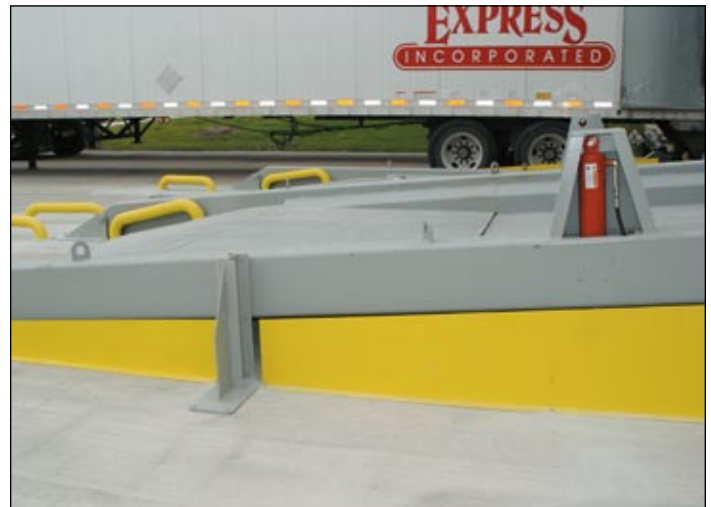
Two 10" (254 mm) wide x 36" (914 mm) high steel-faced dock bumpers are required. Loading dock bumpers are the responsibility of others.

Hydraulics:

The platform is raised by dual 4" (102 mm) ID hydraulic cylinders mounted to stainless steel spherical bushings. The spherical bushings minimize any side loading of the lifting cylinders and platform, increasing cylinder seal life. The hydraulic pump, manifold, and oil reservoir are contained in an integral assembly. Hoses are routed in the leveler platform, away from debris. The unit uses Mil H-5606 hydraulic fluid.

Electrical:

The totally enclosed, fan-cooled motor is rated at 208-240V or 440/480V, 60 Hz, 3 phase, 5 Hp. The controls are mounted in a gasketed Nema 12 enclosure. All electrical components, connections and wiring are UL listed or recognized. Please Note: Unless specifically noted on quotation, all electrical including hook-up is the responsibility of others.



Rite-Hite Corporation

8900 North Arbon Drive Milwaukee, WI 53223 USA (414) 362-6377 (800) 456-0600 FAX: (414) 355-9248
Mailing Address: Rite-Hite Corporation P.O. Box 245020 Milwaukee, WI 53224 USA

www.ritehite.com